



euroart organises for the third time the digital summer exhibition.

This summer the theme of the paintings is TREES.

The participating euroart members / artists' colonies show the exhibition on a screen in their own museum/gallery.

Most of the museums/galleries exhibit also their paintings which they have sent to the digital exhibition.

It would be nice to visit some European artists' villages this summer!



euroart – the European Federation of Artists’ Colonies – came into being in 1994. It was founded in Brussels under the auspices of the European Parliament and the European Commission.

euroart currently consists of about 100 member organisations, associated organisations and personal members, in 13 European countries: Austria, Belgium, Denmark, Finland, France, Germany, Hungary, Italy, Lithuania, Netherlands, Norway, Poland and Russia.

The members hold exhibitions together, exchange views, knowledge and artists. And in annual meetings, next to keeping each other informed of developments in their several colonies, they all work together towards a greater cultural understanding and cooperation in a European context.



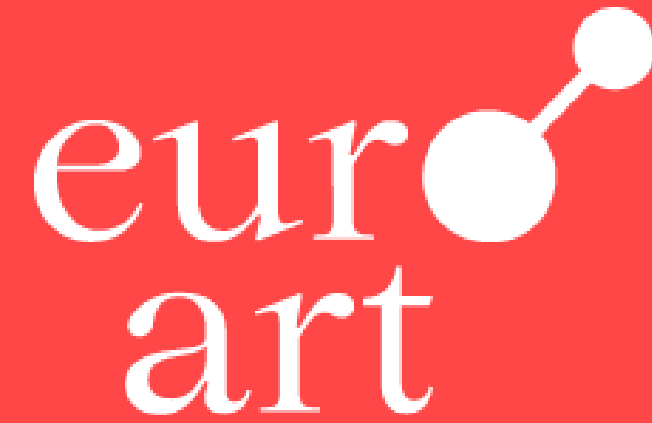


eur30 art 1994-2024 The European Federation of Artists' Colonies

2 Jul
6 Oct
2024

euroart SUMMER exhibition 2024
2 July - 6 October 2024





EUROART SUMMMER EXHIBITION

2024 'TREES'

July – October 2024



Åland Islands (Finland)

Elias Muukka(1853-1938)

Birches, n.d.

Oil on canvas, 23,5x18,5 cm

The Önningeby Museum

onningeby.com

Åland Islands
(Finland)

Ellen Favorin (1853-1919)

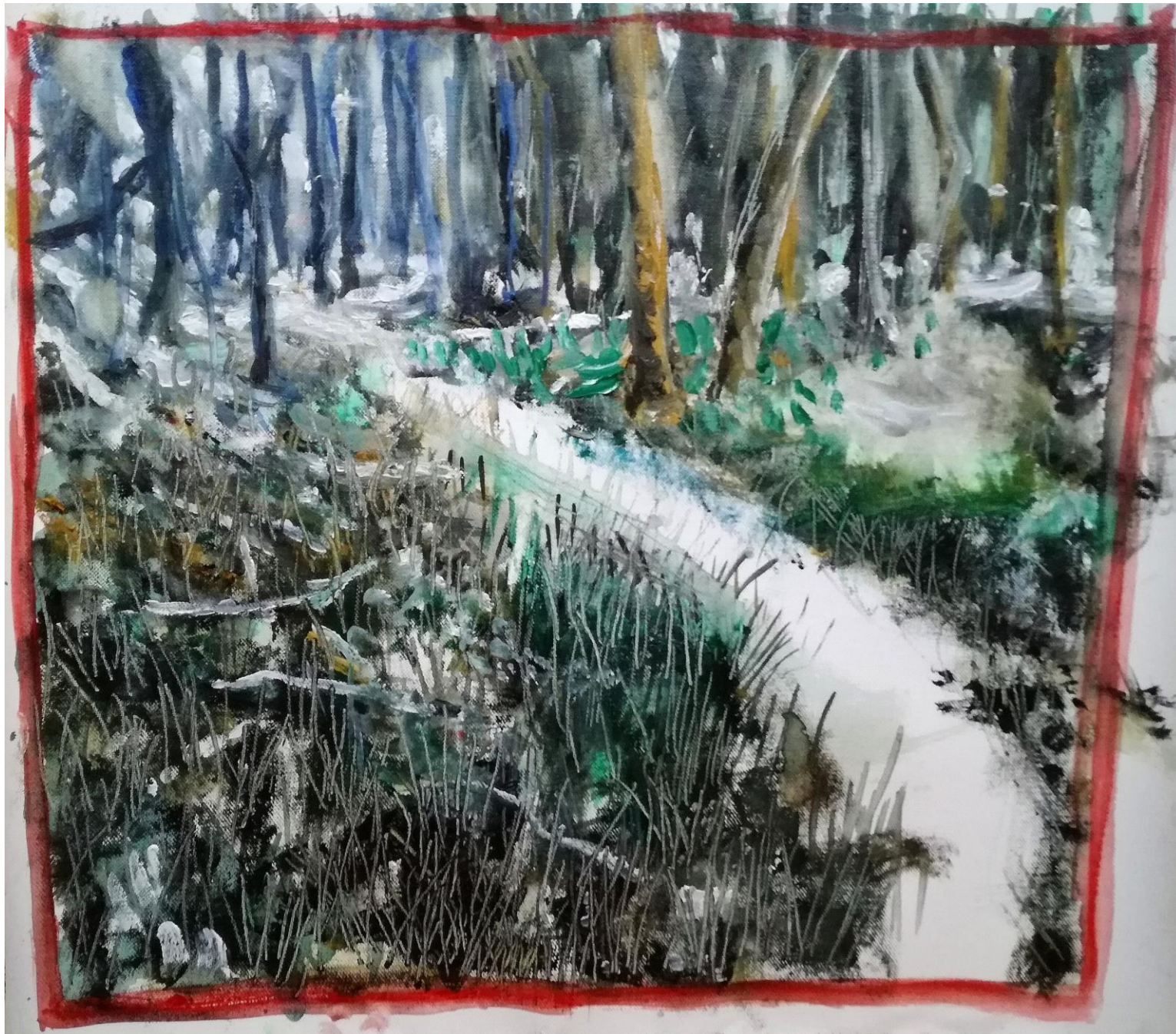
Pine Trees, n.d.

Oil on panel, 15,5 x 25 cm

The Önningeby Museum

onningeby.com





Belgium

Champion

Albertine Trichon

Le grand Meaulnes 1, 2019

© Albertine Trichon

artist in residence at Champion

- lieux-communs.org

Belgium

Champion

Albertine Trichon

Le grand Meaulnes 2, 2019

© Albertine Trichon
artist in residence at Champion

• lieux-communs.org



Belgium

Genk

Emile Van Doren (1865-1949)

Birch Road, n.d.

Oil on canvas

Collection Emile Van Dorenmuseum

- emilevandorenmuseum.be



Belgium

Genk

François Halkett (1856-1921)

In the pine forest, 1884

Oil on canvas

Collection Emile Van Dorenmuseum

- emilevandorenmuseum.be



Belgium

Tervuren

Alphonse Asselbergs

1839 Brussels - 1916 Uccle

*Pollard willows along a ditch in
the Kempen*

Oil on canvas, 47 x 66 cm

Collection Vrienden van de School
van Tervuren

- vriendensvt.be





Belgium

Tervuren

Edouard Huberti

1818 Brussels - 1880 Schaarbeek

Shepherdess with flock on a country road, 1858

Oil on canvas, 55 x 39 cm

Collection Vrienden van de School van Tervuren

- vriendensvt.be

Denmark

Faaborg

Johannes Larsen (1867-1961)

April Evening, 1893

Faaborg Museum

Foto Kirstine Mengel

- faaborgmuseum.dk



Denmark

Faaborg

Poul S. Christiansen (1855-1933)

*From Asmild Klosterskov near
Viborg, 1901*

Oil on canvas

Faaborg Museum

- faaborgmuseum.dk





France

Barbizon

Jules Coignet (1798 – 1860)

The painters 'en plein-air' in the Fontainebleau forest, n.d.

Musée départemental des peintres de Barbizon
©Département de Seine-et-Marne/ Yvan Bourhis

- musee-peintres-barbizon.fr



France

Barbizon

Georges Gassies (1829-1919)

*The house of Théodore
Rousseau, n.d.*

Musée départemental des
peintres de Barbizon

©Département de Seine-et-
Marne/ Yvan Bourhis

- musee-peintres-barbizon.fr

France

Greze-sur-Loing

Oscar Törna (1842-1894)

The very first Swedish artist to
discover Grez in 1876

The old bridge in Grez, 1876

Oil on canvas

- artistes-grezsurloing.fr



France

Greze-sur-Loing

Sir John Lavery (1856 – 1941)

The Irish painter stayed in Grez in 1883 and 84 and returned in 1890.

The Stranger, 1883

Oil on canvas

Private collection

- artistes-grezsurloing.fr





Germany

Bremen

Fritz Overbeck (1869 – 1909)

Giant trees at a creek, 1908

Oil on canvas

Overbeck-Museum, Bremen

- overbeck-museum.de



Germany

Bremen

Hermine Overbeck-Rohte

Birch tree above a moor ditch,
around 1900

Oil on cardboard

Overbeck-Museum, Bremen

- overbeck-museum.de

Germany

Dachau

Emma von Zwiedineck Cloeter
1869-1946

*Landscape with blossoming fruit
trees, around 1920*

Oil on canvas, 48,5 x 65,3 cm

Collection Gemäldegalerie Dachau

- dachauer-galerien-museen.de



Germany

Dachau

Georg von Urlaub
1844–1914

Children in the orchard, around 1890

Oil on cardboard, 31 x 25,5 cm

Collection Gemäldegalerie Dachau

- dachauer-galerien-museen.de



Germany

The Darmstadt Artists' Colony on Mathildenhöhe

Paul Bürck, Patriz Huber / A. Veth, Robert Macco, Heidelberg,

Center door of a three-door closet, 1900-01

Various hardwoods and inlays, 180 x 85 cm

Institut Mathildenhöhe, Darmstadt Municipal Art Collection

- mathildenhoehe.eu



Germany

The Darmstadt Artists' Colony on
Mathildenhöhe

Joseph Maria Olbrich

Bookprinter Heinrich Hohmann, Darmstadt

*Exhibition poster of the Darmstadt Artists'
Colony, 1901*

Institut Mathildenhöhe, Darmstadt Municipal
Art Collection, photo: Gregor Schuster

- mathildenhoehe.eu





Germany

Flensburg

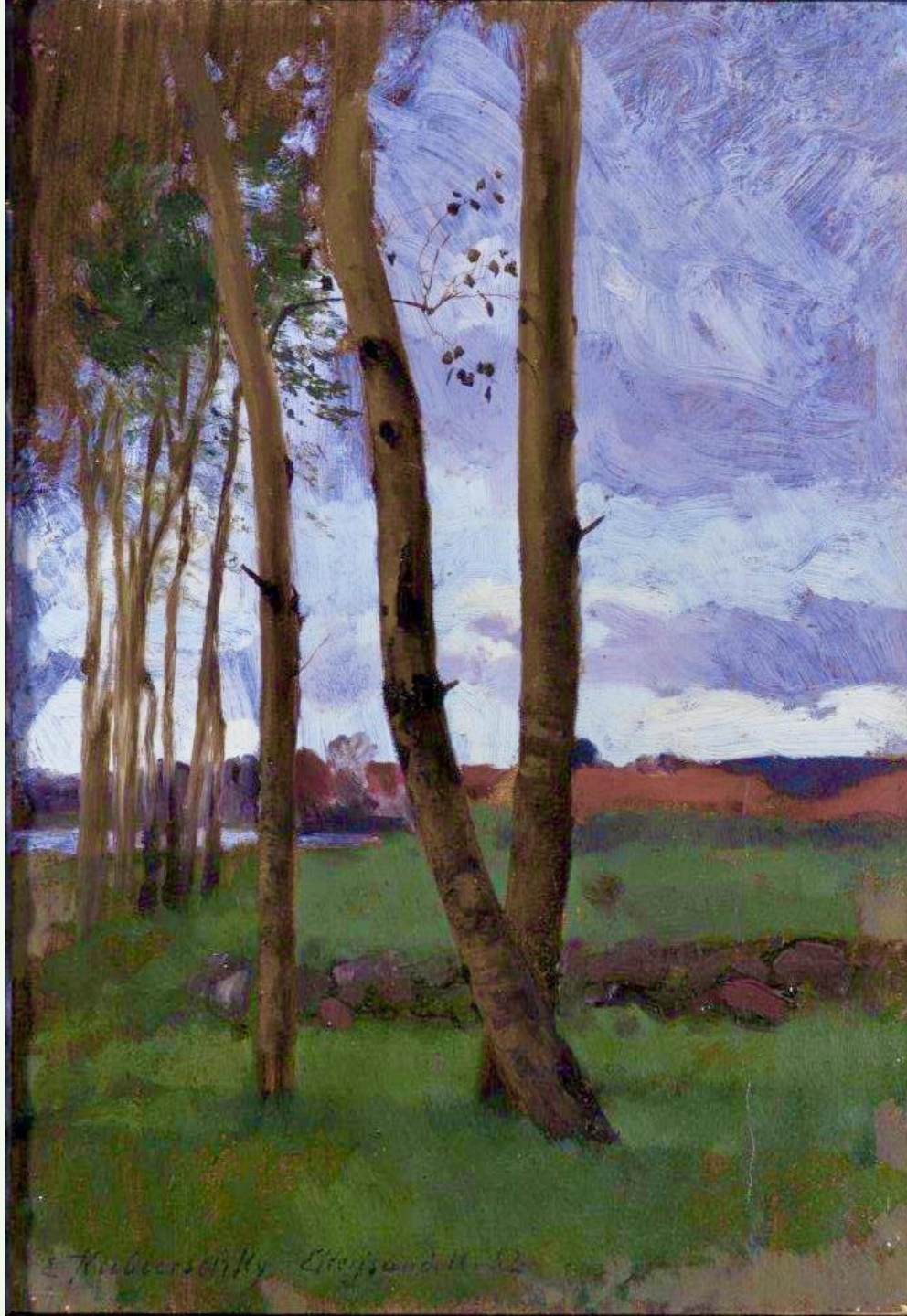
Otto Heinrich Engel
1866-1949

At sunset, 1892

Oil on canvas, 49 x 36 cm

Museumsberg Flensburg

- museumsberg.flensburg.de



Germany

Flensburg

Erich Kubierschky (1854-1944)

Section near Ekensund, 1882

Oil on colouring board, 26,6 x 18,4 cm

Museumsberg Flensburg

- museumsberg.flensburg.de

Germany

Grötzingen

Friedrich Kallmorgen

1859 – 1924

Evening over Grötzingen, 1882

Oil on hardboard

- heimatfreunde-groetzingen.de



Germany

Grötzingen

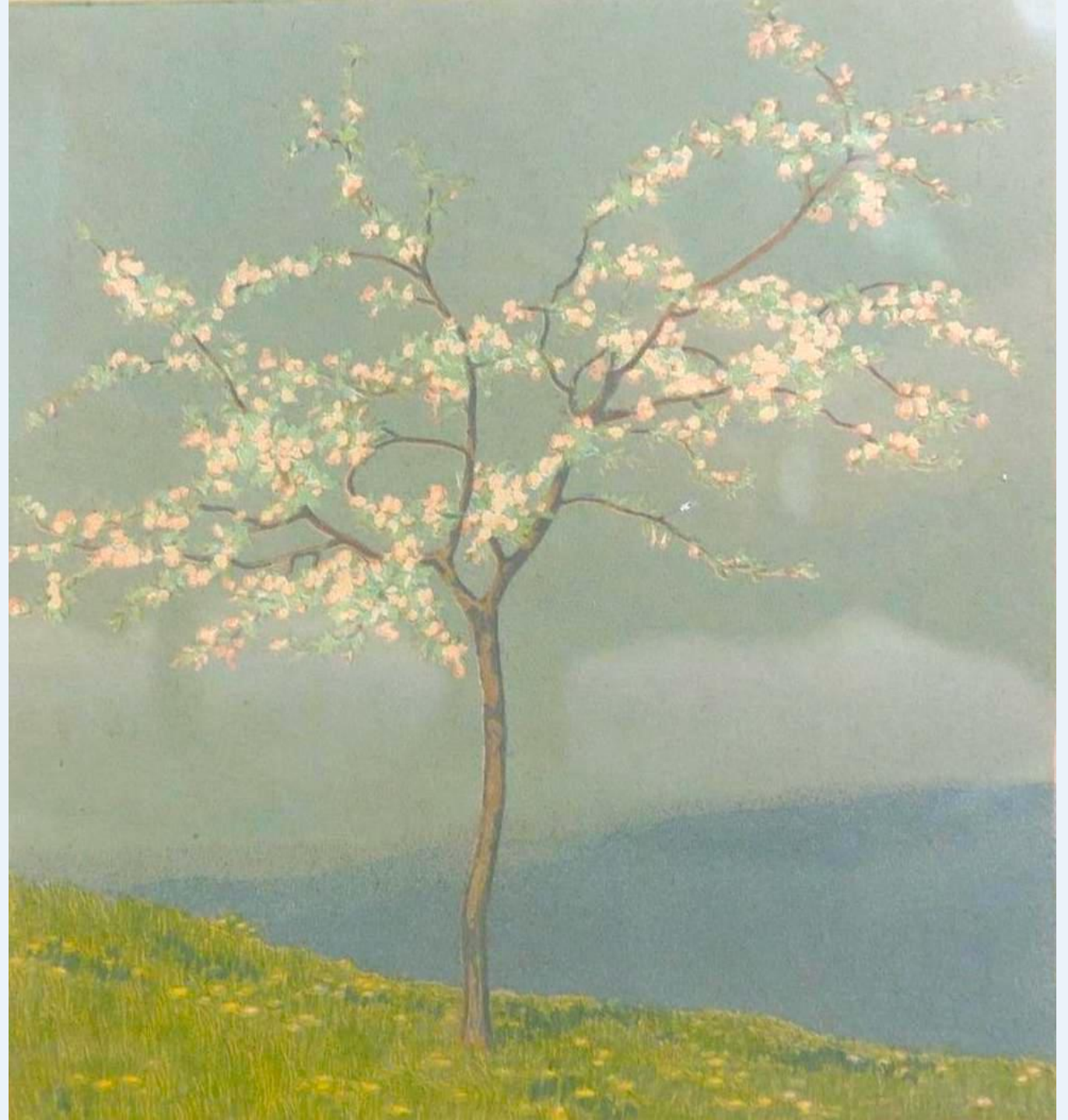
Karl Biese

1863 – 1926

Little almond tree

Colour lithography - hand print / paper

- heimatfreunde-groetzingen.de



Germany

Heikendorf

Georg Burmester (1864–1936)

Forest interior, around 1925

Kittlitztreben in Silesia, today Trzebień, Poland

Oil on canvas

Künstlermuseum Heikendorf-Kieler Förde

- kuenstlermuseumheikendorf.eu



Germany

Heikendorf

Heinrich Blunck (1891–1963)

In the woods (nature study), 1932

Oil on canvas

Künstlermuseum Heikendorf-Kieler Förde

- kuenstlermuseumheikendorf.eu





Germany

Holzhausen am Ammersee

Otto Weil (1884-1929)

Self-portrait as a painter

Oil on canvas, 85 x 54 cm

Private collection

- www.kuk.art

Germany

Holzhausen am Ammersee

Eduard Selzam (1859-1951)

The Scheppallee

Oil on cardboard, 85 x 54 cm

Städtische Kunstsammlung
Darmstadt - Institut Mathildenhöhe

www.kuk.art



Germany

Jamlitz

Walter Kühne
1875-1956

Two Pines, 1906

Etching, 33.5 x 22 cm

- kunst-kultur-jamlitz.de



Germany

Jamlitz

Bianca Commichau-Lippisch
1890-1968

*Lippisch-Hof in Jamlitz with
blossoming trees, around 1920*

Pastel, 30 x 50 cm

- kunst-kultur-jamlitz.de





Germany

Kronberg im Taunus

Peter Burnitz

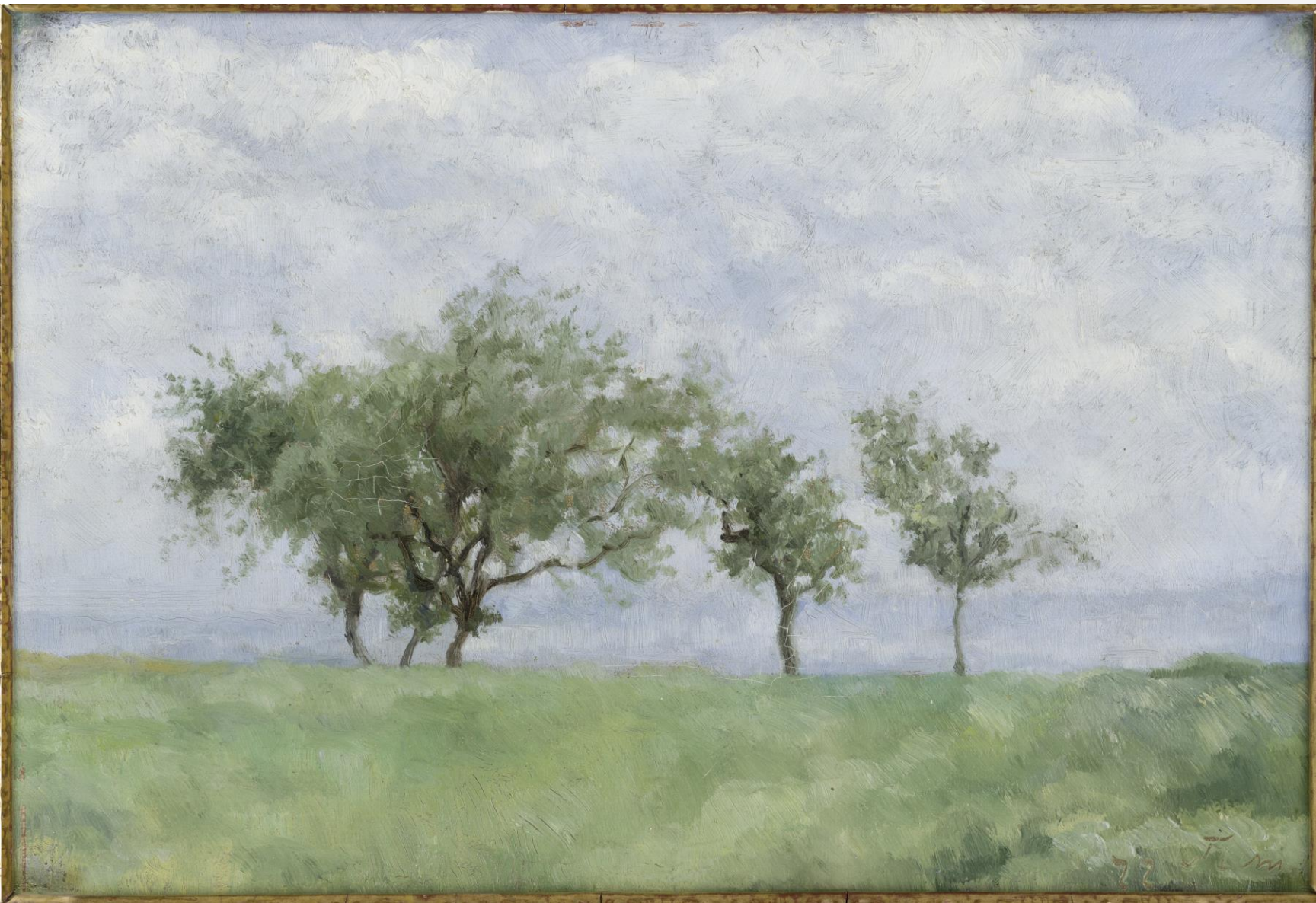
1824 – 1886

Forest landscape with a little stream

Oil on canvas

Private collection/Stiftung
Kronberger Malerkolonie

- kronberger-malerkolonie.com



Germany

Kronberg im Taunus

Louis Eysen

1843 – 1899

Landscape with fruit trees,
1877

Oil on cardboard

Stiftung Kronberger Malerkolonie

- kronberger-malerkolonie.com

Germany

Murnau

Gabriele Münter (1877 – 1962)

Murnau, 1909

Oil on Cardboard

On Permanent Loan of the PSM
Privatstiftung Schloßmuseum Murnau
at the Schloßmuseum Murnau, © VG-
Bild-Kunst, Bonn 2024

- schlossmuseum-murnau.de



Germany

Murnau

August Macke (1887-1914)

In Front of the Hat Shop, 1913

Oil on canvas

On Permanent Loan of the KK-Stiftung
Murnau im Schloßmuseum Murnau,
Photograph: Nikolaus Steglich, Starnberg

- schlossmuseum-murnau.de



Germany

Murnau

Basia Jankowsky

Tree in front of foggy wood

Oil on canvas, 60 x 80 cm

Künstlervereinigung Murnau
e.V., TUSCULUM

- tusculum-murnau.de



Germany

Murnau

Elisabeth Kaiser

The wishing tree

Acryl, 80 x 80 cm

Künstlervereinigung Murnau e.V.,
TUSCULUM

- tusculum-murnau.de



Germany

Schwaan

Alfred Heinsohn (1875-1927)

The Lindenbruch near Schwaan,
1898

Oil on canvas

Kunstmuseum Schwaan

- kunstmuseum-schwaan.de





Germany

Schwaan

Rudolf Bartels (1872- 1943)

Blühender Baum, um 1920

Oil on Cardboard

Kunstmuseum Schwaan

- kunstmuseum-schwaan.de

Germany

Solingen

Erwin Bowien (1899-1972)

Palm trees in a winter garden, 1932

oil on canvas

Photo: Daniela Tobias

schwarzes-haus.com





Germany

Solingen

Bettina Heinen-Ayech
1937-2020

*Olive trees in a poppy
field, 1986*

Watercolor

Photo: Thomas Wölfer

• schwarzes-haus.com



Germany

Worpswede

Paula Modersohn-Becker

1876-1907

Thick birch trunk, 1901

Oil on Cardboard

Worpsweder Kunststiftung Friedrich
Netzel, ©Worpsweder
Museumsverbund/Rüdiger Lubricht

- worpsweder-kunsthalle.de



Germany

Worpswede

Hans am Ende

Spring in Worpswede, around
1900

Oil on canvas

Worpsweder Kunststiftung Friedrich
Netzel, © Worpsweder
Museumsverbund/Rüdiger Lubricht

- worpsweder-kunsthalle.de

Germany

Worpswede

Heinrich Vögeler

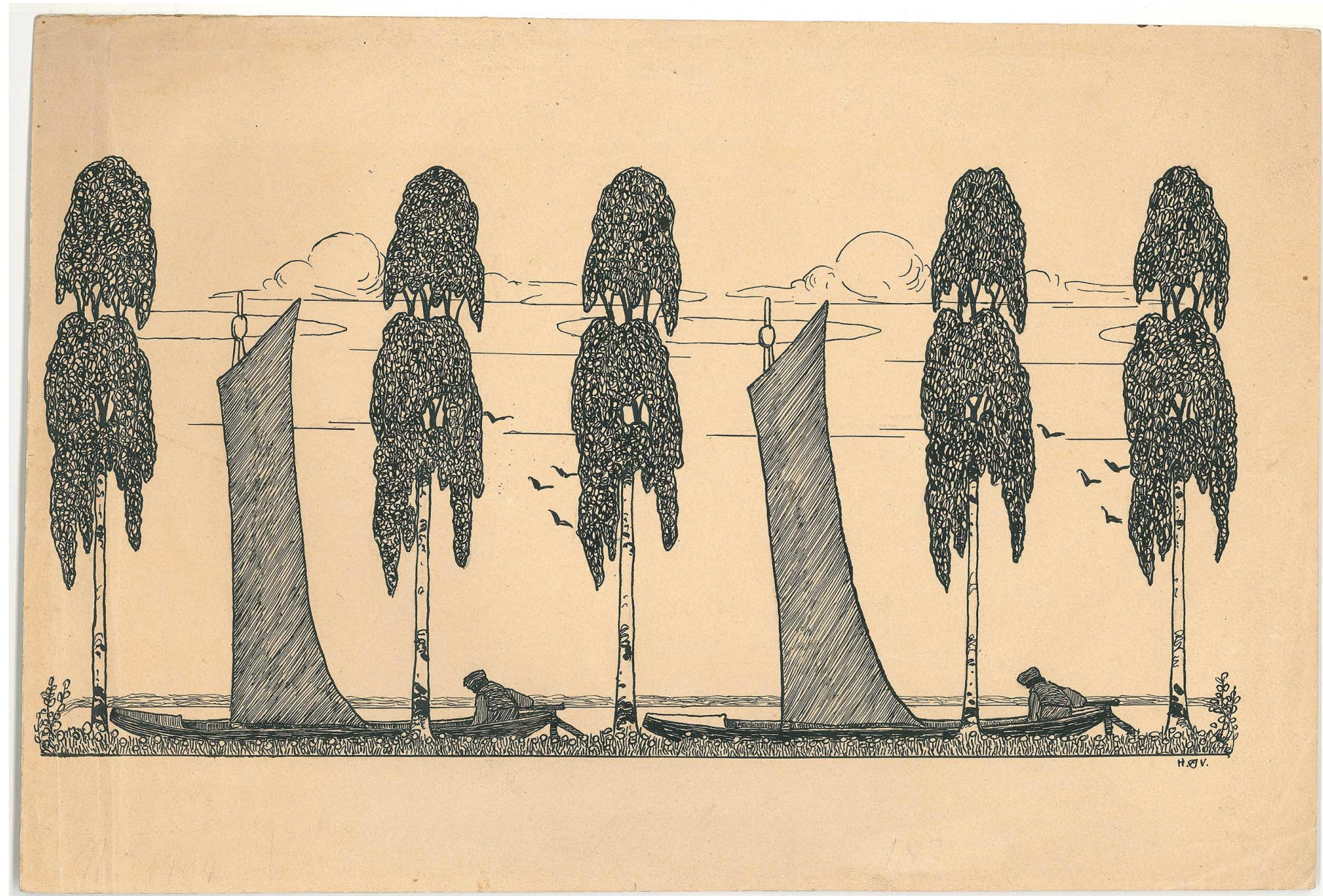
1872 - 1942

*Peat barges on the river
with birch trees, 1894*

Pen and ink drawing

Barkenhoff/Heinrich-Vogeler-
Museum - Barkenhoff
Foundation Worpswede

• worpswede-museen.de



Germany

Worpswede

Heinrich Vögeler

1872 - 1942

At the heatherland, 1900

oil on canvas

Barkenhoff/Heinrich-Vogeler-Museum -
Barkenhoff Foundation Worpswede

on permanent loan from the Böhm Collection,
Berlin

- worpswede-museen.de



Lithuania

Kaunas

Edma Morisot (1839–1921)

*Wood Landscape with a
Woman's Figure*

Oil on canvas, 48 x 63 cm

Barbizon painting in:
Collection M. K. Čiurlionis
National Museum of Art

- ciurlionis.lt



Lithuania

Kaunas

N.V. Diaz de la Peña
1809–1876

In the Fontainebleau Forest

Oil on canvas 80,5 x 116,5 cm

Barbizon painting in:
Collection M. K. Čiurlionis
National Museum of Art

- ciurlionis.lt





The Netherlands

Domburg

Jacoba van Heemskerck

Bild (Landscape with tree), 1915

Oil on canvas, 60 x 63 cm

MTVP Museum Domburg

- marietakmuseum.nl / iceac.eu



The Netherlands

Domburg

Edmond Verstraeten

1870-1956

Study, trees, n.d.

Oil on canvas, 75 x 55 cm

VZW Edmond Verstraeten
exhibited in
MTVP Museum Domburg

- marietakmuseum.nl / iceac.eu

The Netherlands

Katwijk

German Grobe (1857-1938)

Voorstraat in Katwijk aan zee, n.d.

Oil on canvas, 90 x 100 cm

Collection Genootschap Oud Katwijk,
Katwijk's Museum

- katwijksmuseum.nl





The Netherlands

Katwijk

C.P. Gruppe

1860 – 1940

Village view, n.d.

Oil on canvas, 46,5 x 61,5 cm

Collection Genootschap Oud
Katwijk, Katwijks Museum

- katwijksmuseum.nl

The Netherlands

Katwijk

Fred Thoolen

Panbos, n.d.

Watercolor, 73,5 x 52 cm

Foundation Kunstvereniging
Katwijk

- schilderenaanzee.nl



The Netherlands

Katwijk

Joanna Quispel

1^e Elsgeesterweg in
Rijnsburg, n.d.

Pastel, 17,5 x 27,5 cm

Foundation
Kunstvereniging Katwijk

- schilderenaanzee.nl



Rijnsburg, eerste Elsgeesterweg juli 23

Joanna Quispel

The Netherlands

Laren

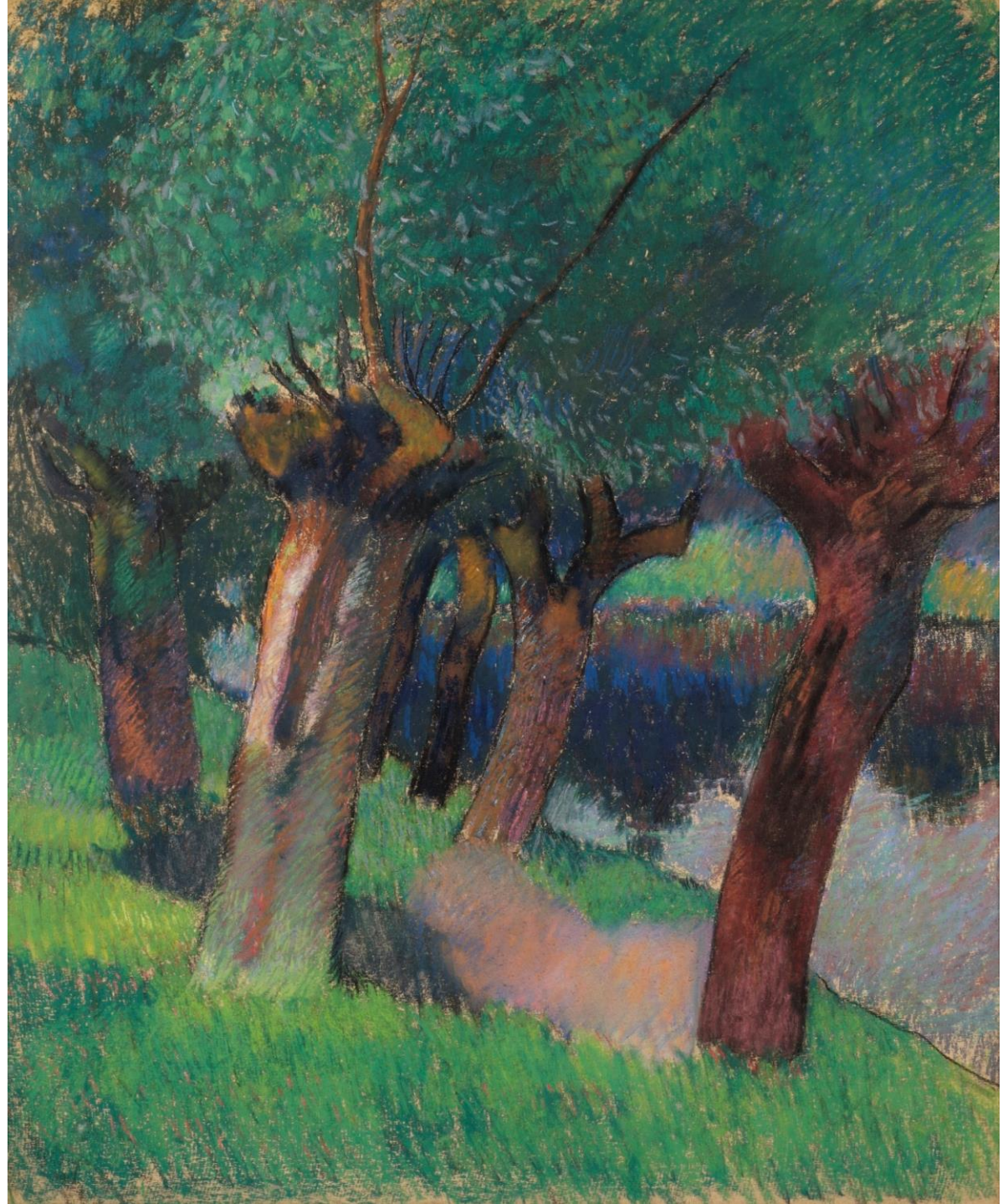
Philippe Smit (1887-1948)

The willows, 1917

Pastel on paper, 89,6 x 75,6 cm

Singer Laren, acquisition with support
of the Rembrandt Association and the
VSB Foundation 2000

- singerlaren.nl



The Netherlands

Laren

Ferdinand Hart Nibbrig
1886-1915

Orchard, ca. 1903

Oil on canvas, 50,5 x 60,5 cm

Singer Laren, bequest of P.J.
Hart Nibbrig 1985

• singerlaren.nl





The Netherlands

Nunspeet

Ben Viegers (1886-1947)

Forest path with sunlight, n.d.

Oil on canvas, 40 x 50 cm

Noord-Veluws Museum,
collection Municipality
Nunspeet

- noord-veluws-museum.nl



The Netherlands

Nunspeet

Chris ten Bruggen Kate
(1920-2003)

Summery trees, around
1980

Oil on canvas, 80 x 80 cm

Collection Noord-Veluws
Museum

- noord-veluws-museum.nl

The Netherlands

Renkum

Barend Ferwerda

1880-1958

*Hilly landscape with a tree
by a stream, n.d.*

Oil on canvas, 47,5 x 68,5 cm

Collection Museum
Veluwezoom

• museumveluwezoom.nl



The Netherlands

Renkum

Andries Verleur

1876 – 1953

Hollow road on the Veluwe,
n.d.

Oil on canvas, 44 x 61 cm

Collection Museum Veluwezoom

• museumveluwezoom.nl



Krisztián Horváth (1976)

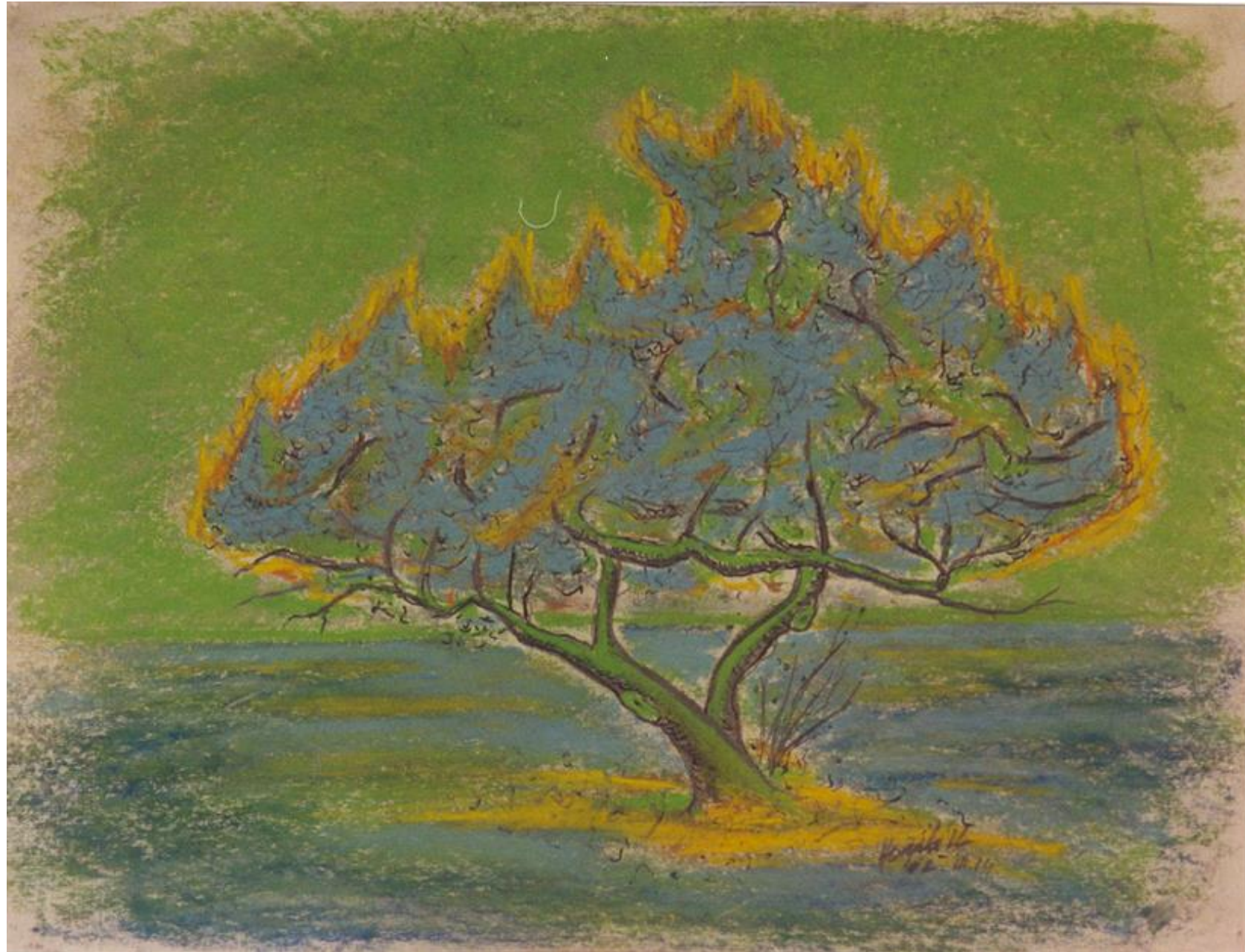
Tree II, 2002

Pastel on paper, 32 x 42 cm

Collection CFVV/ LUMO,
Domburg
lumofoundation.eu

International Centre for the Study
of European Artists' Colonies
(ICEAC)

- iceac.eu





www.euroart.eu

eur30^o
art we inspire
cultural connection
since 1994

euro^o
art The European Federation
of Artists' Colonies